

HEAVY RENTAL PRODUCT GUIDE



MacAllister



The MacAllister Difference

COMMITMENT TO RENTAL

HEAVY RENTAL

At MacAllister Machinery, we're proud to be able to offer our customers a wide variety of options to meet their equipment needs. When renting is the best solution, our Heavy Rental group is ready to help.

- Short-term / Monthly / Long-term Rental
- In most instances, we offer same day or next day delivery utilizing our team of outside hauling vendors or the customer has the option to pick up equipment at many of our MacAllister locations.
- MacAllister Heavy Rental utilizes the latest in technology from dual mast GPS via SITECH to Cat® integrated technology. Call for details. **SITECH**
- We also offer rental purchase options, ask for details.
- **Just looking for a rental quote?**
Call, email or visit our website.

Call: 317-803-2526

Email: macheavyrents@macallister.com

Website: www.macallister.com/equipment/rental-equipment



MacAllister Machinery Co. also offers equipment rental for Agriculture, Electric Power and Underground Shoring & Pump. Our MacAllister Rental stores have a wide range of rental equipment, including telehandlers, lifts, light towers, and smaller Cat machines.

MacAllister Performance

FIELD AND IN-SHOP SERVICE



CONSTRUCTION / HEAVY RENTAL / AG / ON-HIGHWAY / POWER SERVICE / BLUE BIRD® BUS

- **Factory Certified Technicians** — training and experience make them the best in the industry
- **On-Going Service Training** — for all service personnel includes regular updates and technical support



- **Field Service Technicians** — over 150 technicians specially trained for on-site and emergency repairs
- **Available 24 hours a Day** — our field service professionals are there where and when you need them
- **Fully Equipped Service Trucks** — specially equipped for the industry they serve
- **Centralized Field Service** — connects all field personnel in a network pool to ensure you get the right technician at the right time
- **Portable Weld/Bore and Machining Services**



- **Portable Diagnostic Tooling**
- **Component Rebuild Center**
- **Custom Track Service**
- **Hydraulic Repair**
- **Engine Dynamometers / Special Tooling**

HEAVY RENTAL PRODUCTS



MEDIUM WHEEL LOADER

Model	Net Power (hp)	Operating Weight (lb)	Bucket Capacity (yd ³)
950M ¹	230	42,357	3.3-12.0
962M ¹	250	44,591	3.3-12.0
966M ¹	276	51,176	3.25-12.0
966M XE ^{1,2}	278	51,080	4.2-9.3
972M ¹	299	54,871	3.75-13.0
972M XE ^{1,2}	300	54,930	4.5-13.0
980M ¹	386	66,318	5.25-16.0
982M ¹	392	78,382	6.0-15.75

¹ Meets U.S. EPA Tier 4 Final emission standards

² With Cat continuously variable transmission

Note: Net power is based on SAE J1349.

HYDRAULIC EXCAVATORS



Model	Net Power (hp)	Operating Weight (lb)	Max Reach Depth (ft-in)
321D LCR	148	53,704	32'1"/22'0"
323F L ²	161	56,000	32'4"/22'1"
326F L ²	200	56,580	33'2"/22'4"
329F L ²	235	64,750	35'0"/23'9"
336F L ²	303	86,600	38'5"/26'10"
336E LH Hybrid	308	82,000	38'5"/26'10"
349F L ²	396	116,600	42'6"/29'4"
349F L ME	396	112,400	bucket capacity 4.48 yd ³
374F L ²	472	161,376	46'8"/31'7"
390F L ²	524	199,745	56'7"/39'9"

MASS EXCAVATOR

349F L ME	396	112,400
-----------	-----	---------

² With Cat continuously variable transmission

WHEEL HYDRAULIC EXCAVATOR



Model	Net Power (hp)	Max Operating Weight (lb)	Max Reach Depth (ft-in)
M318F ²	171	42,549	31'5"/19'8"
M320F ^{2,3}	171	46,385	32'1"/20'9"

² Meets Tier 4 Final emission standards

³ Material Handler versions of the M320F (MH3022) & M322D (M322D MH) are available

Note: Maximum digging depth with longest boom/stick options

Note: Net power is based on ISO 9249

All engine Horsepower (hp) are metric

TRACK LOADERS



Model	Net Power (hp)	Max Operating Weight (lb)	Bucket Capacity (yd ³)
963D	189	44,577	3.2

Note: Includes GP bucket plus long bolt-on teeth and segments

Available with couplers with buckets and forks for utility work

TRACK-TYPE TRACTORS



Model	Net Power (hp)	Operating Weight (lb)	Blade
D5K2 XL ^{1,3}	104	20,313	VPAT
D5K2 LGP ^{1,2}	104	20,992	VPAT
D6K2 XL/LGP ^{1,2}	130	29,346-30,750	VPAT
D6N XL/LGP ^{1,2}	150	36,392-39,895	SU, VPAT
D6T XL/XW/LGP ^{1,3}	207	46,263-53,651	S, SU, A, VPAT
D7E STD/LGP ^{1,3}	238	57,441-62,886	S, SU, U, A
D8T STD/LGP ³	312	82,496-86,900	SU, U, A
D9T ^{3,4}	436	106,618	SU, U

¹ Available with MS ripper

² Meets Tier 4 Interim emission standards

³ Meets Tier 4 Final emission standards

⁴ Available with MS ripper, SS ripper, counterweight

⁵ Power Management: Reverse 722hp/538 kW

Note: Winch available for D3K to D10T2

ARTICULATED TRUCKS



Model	Net Power (ISO 14396) (hp)	Operating Weight Empty (lb)	Body Capacity (ton)
725C	316	51,191	26
730C	370	53,131	31
730C EJ	370	59,084	31
735C	447	69,446	36
740C EJ	504	79,366	42
745C	504	73,634	45.2

Note: All models meet Tier 4 Final emission standards

OFF-HIGHWAY TRUCKS



Model	Gross Power (hp)	Nominal Capacity (ton)	Top Speed (mph)
770G	515	40.5	45.7
772G	605	48.6	49.5
773G	775	61	38.6

Note: The 770G, 772G, 773G are available as Tier 4 Final or Tier 2 Equivalent

WHEEL TRACTOR SCRAPERS



Model	Power (hp)	Capacity (yd ³)	Weighted Load (ton)
621K	407	24	28.8
627K	(T) 407 (S) 290	24	28.8
E SERIES			
613C	175	11	26,400 lb
615	265	17	40,800 lb

MOTOR GRADERS



Model	Base Power (hp)	Max Net Power w/Optional VHP+ (hp)	Operating Weight (lb)	Std Blade Length (ft)
M SERIES				
140M ¹	183	233	41,868	12
140M AWD ¹	223	268	43,834	12
160M ¹	213	248	43,464	12
14M	259	294	53,738	14
M SERIES 2				
120M ²	145	189	39,892	12

¹ Available in Canada

² Ripper is standard on 24M and is included in the operating weight

Note: Meets Tier 4 Interim emission standards

SOIL COMPACTORS



Model	Net Power (hp)	Operating Weight (lb)	Blade Width Over End Bits (ft-in)
815F2 ¹	232	45,765	12'4"
825K ²	405	78,326	15'2"

¹ Meets Tier 3 equivalent emission standards

² Meets Tier 4 Final emission standards

SINGLE DRUM SOIL COMPACTORS



Model	Gross Power (hp)	Operating Weight (lb)	Drum Width (in)
CS54B	131	23,265	84
CP54B	131	24,539	84
CS56B	157	25,346	84
CP56B	157	25,707	84
CP74B	173.7	36,048	84

Note: Weights with ROPS/FOPS cab

TANDEM VIBRATORY ROLLERS



Model	Gross Power (hp)	Operating Weight (lb)	Drum Width (in)
CB54 XW	137	28,312	79
CB64	137	30,291	79

ASPHALT PAVING EQUIPMENT



Model	Gross Power (hp)	Operating Weight (lb)	Std Paving Width (ft-in)
Cat AP255E	46	9,920 (1)	4'7"
Cat AP1055F	225	37,398	10'0"

MTS; MOBILE TRACK SOLUTIONS

Model

11 x 32 Construction Disk — 11' wide with 32" disks
Enables simple disk replacement in the field

Telescopic vertical lift design

MT12 Roller Blade — 11' wide drum with unique gooseneck design
Ideal for keeping grade level and packing (sealing) the work area before a rain
Standard hydraulic lift capability



WEILER PAVING EQUIPMENT



Model	Gross Power (hp)	Weight (lb)	Std Paving Width (ft-in)	Hopper Capacity (cu yd)
P385 Paver	100	19,500	8'-15'8"	
Weiler W530 Widener	120-Engine 2WD Cat C3.4 Tier 4f	26,000	1'-10'	3.5
	137-Engine 4WD Cat C3.4 Tier 4f			
E2850 Remixing Transfer Vehicle	300	74,500	Storage Capacity 25 tons	Operating Platform 12" shifting



MacAllister At-a-Glance

SCOPE OF BUSINESS

When the work you do depends on the productivity of your equipment, it pays to have a local source for top-quality products you can rely on. For over 72 years, MacAllister Machinery has been helping businesses like yours achieve its goals. We offer the quality and selection you're searching for backed by customer service dedicated to your total satisfaction.

As the authorized Cat® dealership for the region, MacAllister has the broad capabilities to meet all of your equipment needs with over 300 different models of Cat equipment and other top brands, with rental, sales, parts, service, and technology solutions.



NEW EQUIPMENT

- Cat Machines
- Work Tool Attachments
- Agriculture Equipment
- Electric Power
- Industrial Engines
- School Buses/
Blue Bird®
- Outdoor Power Equipment



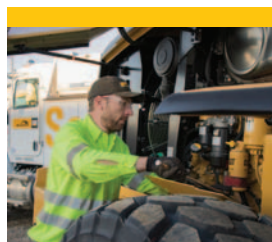
USED EQUIPMENT & PARTS

- Heavy Equipment
- Electric Power
- Agriculture Equipment
- School Buses
- Outdoor Power Equipment
- Used Cat Parts



RENTAL EQUIPMENT

- MacAllister Rentals/
The Cat Rental Store
- Heavy Rental
- Power Systems
- Ag Rental
- Railroad Machinery
- Underground
Shoring & Pump



PARTS & SERVICE

- Cat Parts
- Parts Solutions
- Service Solutions
- Professional Services

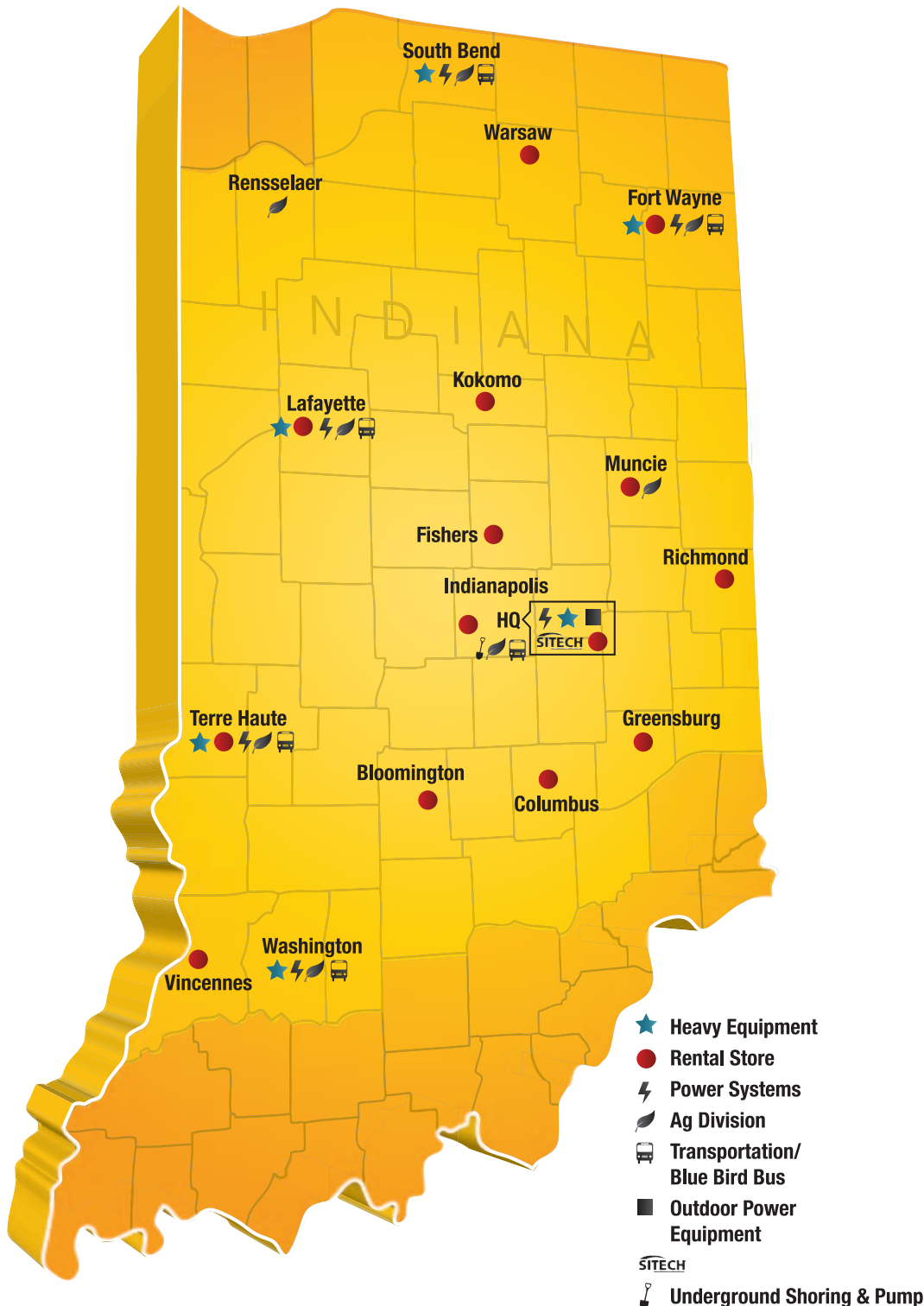


TECHNOLOGY

- VisionLink
- EM Solutions
- Equipment Data
- S·O·S Services
- SITECH®



MACALLISTER INDIANA FACILITY LOCATIONS



Indianapolis HQ
(317) 545-2151 • (800) 382-1896

Indianapolis SE Ag/Bus
(317) 591-9100 • (866) 862-2228

Indianapolis SE Shoring & Pump
(317) 791-2323

Indianapolis West
(317) 244-7368 • (877) 700-1945

Bloomington
(812) 349-9220

Columbus
(812) 376-0538

Fishers
(317) 598-9700

Fort Wayne
(260) 483-6469 • (800) 944-0847

Greensburg
(812) 663-5829

Kokomo
(765) 689-0111

Lafayette
(765) 449-8191 • (800) 283-4231

Muncie
(765) 759-2228

Rensselaer
(219) 866-3009

Richmond
(765) 966-0626

South Bend
(574) 288-6622 • (800) 685-9849

Terre Haute
(812) 478-3155 • (800) 273-5650

Vincennes
(812) 886-4035

Warsaw
(574) 267-3230

Washington
(812) 254-1712 • (800) 932-5120



800-382-1896 www.macallister.com

New Corporate Headquarters: 6300 Southeastern Ave, Indianapolis, IN 46203

